



*OXBOW*

# WOMEN

AUTUMN-WINTER 2012



# HISTORY OF A PASSION

Founded in France in 1985, Oxbow was born from the meeting of boardsports fanatic Fabrice Valéri and fashion stylist Isabelle Cachot.

The brand was developed alongside iconic athletes, like Laird Hamilton, pioneer of tow-in surfing, kitesurf, foilsurfing or more recently stand-up paddle surfing. From the beginning of the brand, Oxbow has never stopped exploring new territories and following riders on their craziest projects.

Thanks to their close contact with these athletes, who cover all disciplines (surf, snow, kite, freestyle skiing or windsurfing), from the very beginning Oxbow has created products that combine quality, technicality and creativity.

Oxbow gives riders the chance to live their passion for boardsports, without restraints while always respecting their playground, Nature.

This is Oxbow's raison d'être, because nature will always be stronger than humanity.

---

Créée en France en 1985, Oxbow est née de la rencontre entre un passionné des boardsports, Fabrice Valéri et une styliste de mode, Isabelle Cachot.

La marque s'est développée au contact des plus grands athlètes, à l'image de Laird Hamilton, pionnier du surf tracté, du kitesurf, du foilsurfing ou plus récemment du stand up paddle. Depuis sa création, Oxbow n'a eu de cesse d'explorer de nouveaux territoires, accompagnant les riders dans leurs projets les plus fous.

C'est au contact de ces sportifs, évoluant dans toutes les disciplines (surf, snowboard, Kitesurf, ski freestyle ou encore windsurf) qu'Oxbow élabore depuis ses débuts des produits alliant qualité, technicité et créativité.

Donner l'opportunité aux riders de vivre leur passion pour la glisse, sans aucune contrainte dans le respect de leur terrain de jeu, la nature. Telle est la raison d'être d'Oxbow aujourd'hui. Parce que la nature restera toujours plus forte que l'homme.

---





## CONTENTS

- 02 Team riders
- 04 Knit story
- 06 Denim 20 oz
- 08 Oxbow Eco label
- 09 Features overview
- 10 TRIP - Slide to the wild side
- 16 DOWNTOWN - Preppy Casual
- 22 Women collection
- 58 Overview
- 68 Index

**WOMEN COLLECTION  
AUTUMN / WINTER 2012**

**UNLIMITED  
TEAM**



**JASON POLAKOW**  
WINDSURF



**LAIRD HAMILTON**  
SURF



**DUANE DESOTO**  
SURF



**LEVI SIVER**  
WINDSURF



**JP SOLBERG**  
SNOWBOARD



**LOLO FAVRE**  
FREESTYLE SKI

**EXPLORATION  
TEAM**



**SARAH MARTINAIS**  
FREESTYLE SKI



**DAVID LIVET**  
SNOWBOARD



**CARINE CAMBOULIVES**  
WINDSURF



**BAPTISTE GOSSEIN**  
WINDSURF



**FLO CUVILLER**  
FREESTYLE SKI



**TUVA JANSEN**  
KITESURF



**BERTRAND FLEURY**  
KITESURF



**IAN ALLDREDGE**  
KITESURF



**LUDO STROHL**  
SNOWBOARD



**CHRIS WEBER**  
SNOWBOARD



**JEREMIE ELOY**  
KITESURF



**MANU BOUVET**  
WINDSURF



**TOBIAS TRITSCHER**  
FREESTYLE SKI

**PROGRESSION  
TEAM**



**KAI LENNY**  
KITESURF - WINDSURF



**ALICE ARUTKIN**  
WINDSURF



**ALICIA BONNAUD**  
SNOWBOARD



**ANTOINE DELPERO**  
SURF



**CHARLY TERMEAU**  
SURF



**JULIEN LANGE**  
FREESTYLE SKI



**KALLE OHLSON**  
SNOWBOARD



**LUCIA MARTINO**  
SURF



**MARION GOUWY**  
SNOWBOARD



**MATT MEOLA**  
SURF



**SOPHIE RODRIGUEZ**  
SNOWBOARD



**THOMAS GERIN**  
SNOWBOARD



**THOMAS DELFINO**  
SNOWBOARD

**AND MORE ...**

# KNIT STORY

From fine-knit to loose-knit

*Lucia  
Mankin*



D2TIASSALE



D2TAWI

D2DOLNY

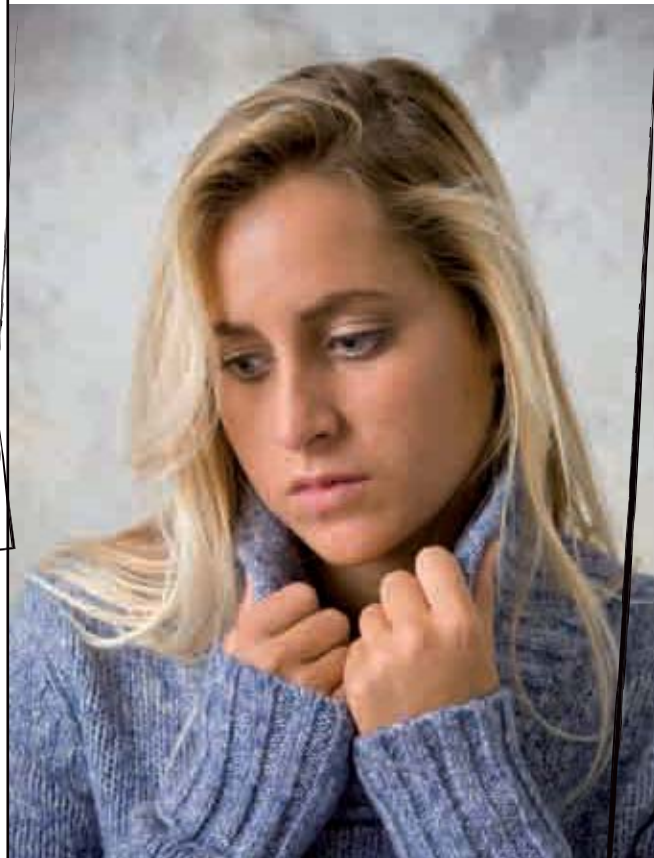




Mariam  
Gouxy

D2DARGAZ

D2DOUCHEN



D2DAMOUR



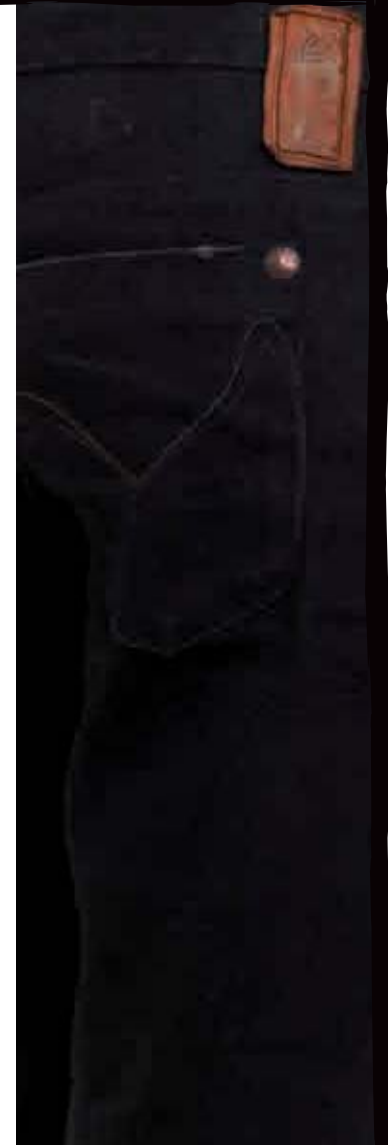
# DENIM

20 OZ

## INDESTRUCTIBLE DENIM

Your denim for life, hard wearing and comfortable.

Le Denim d'une vie, résistant et confortable.







**D2DORBNADT**



**D2DIANADAR**

# OXBOW ECO LABEL

In association with Lafuma Group, Oxbow is committed to improving the impact of its products on the environment, through:

- Raw materials used in product manufacturing
- The machine operating time required to manufacture a product
- The impact of transport
- The product's recyclability level

All our teams, in particular the collection and production teams, work hard to achieve this on a daily basis. To see the proof of Oxbow's commitment, consumers need to look for a special Naturally Committed Grade ©label. This is a scale used to measure the ecological friendliness of our products.

These four criteria are assessed on a scale from 1 to 3 (good enough/good/excellent) to facilitate consumer's comprehension of the impact that products have on the environment. This label is on all our Naturally Committed products.

Les produits Naturally Committed sont la résultante de l'engagement d'Oxbow dans une démarche de Développement Durable axée sur quatre critères :

- Les matières premières utilisées dans la fabrication du produit
- Le temps machine nécessaire à la réalisation du produit
- L'impact du transport
- Le niveau de recyclabilité du produit

Cet engagement de la marque est visible pour nos consommateurs par le biais d'un étiquetage spécifique, le Naturally Committed Grade ©, une échelle de mesure de quatre indicateurs.

Quatre critères évalués sur une échelle de 1 à 3 (moyen/bon/excellent) pour une meilleure appréhension par le consommateur de l'impact du produit sur l'environnement. Un étiquetage qui sera présent sur l'ensemble des produits Naturally Committed en boutique.

# FEATURES

## OVERVIEW



**Raw materials**  
The fashioning of raw materials, from the "cotton flower" to the roll of fabric.  
**Matières premières**  
de la «fleur de coton» au rouleau de tissu.

**Manufacture energy**  
Energy consumed for product manufacturing.  
**Energie fabrication**  
Energie consommée lors de la fabrication du produit.

**Transport**  
The product's journey from the manufacture factory to our logistics centre (Gironde, France).  
**Transport**  
Parcours du produit de l'usine de confection à notre centre logistique (Gironde, France).

**Sturdiness & recycling**  
Resistance and recycling potential.  
**Robustesse & Recyclage**  
Résistance et aptitude au recyclage.



**NATURALLY COMMITTED**



**Recycled polyester**  
Polyester recyclé



**Supreme Suede**  
**Polyester peach fabric**  
Matière polyester suédé



**Body mapping**  
Basé sur la morphologie du corps



**Essentials**



**Marketing push**  
Produits marketing



**No inside seam**  
Entre-jambes sans couture





# TRIP

## Women Collection

The Trip Winter 2012-2013 collection revolves around the Idea of a worldwide community; where its members come from every corner of the world, mixing their cultures, sharing their passions and values. Nature is at the center of their lives and activities and yet they are also a people of their time- making the most of each new technology and always up to the minute. Members enjoy life with a laid back attitude, always up for having fun.

The oxbow woman's style becomes a game of mixing and layering, combining materials and colors for a look that takes its inspiration from the "worker" style, and is superimposed with a sense of poetic femininity and a desire for purity-a sense of timelessness.

Oversized armholes, and accentuated volumes and lengths, summarize the shapes and details of the season which include: capes, printed chinos, a packable jacket, and inviting detailing such as elbow patches, hoods and inside sherpa.

The materials embody the ideals of comfort, warmth and protection: with bonded fabrics, velvets, Sherpa linings, and nylon fabrics. They also, through applied washes, embody a rustic/ authentic feel- as if worn by time and the natural elements. These include the heather yarns, neppy effects, intarsias, and embellished knitwear. Providing the finishing touches are the leather trims; reinforcing the emphasis on simplicity and nature- the common thread for the season's collection.

The color range is expressed through two separate palettes, both based on natural tones (namely cord and beige). The first combines Dark grey, and Pearl pink- the poetry of winter- and is both gentle and autumnal, accentuated with touches of honey. The second plays with winter skies and the last of the summer rays -a medley of Storm blue, Dark brown, and Hot coral.

La collection Trip Hiver 2012-2013 est plongée dans l'univers d'une communauté dont les membres viennent des quatre coins du monde: mix culturel, partage de passions, de valeurs. La nature est au centre de leurs occupations et préoccupations, mais ils vivent avec leur temps et profitent de toutes les nouvelles technologies afin de rester connectés. Ces membres profitent de la vie avec fun et légèreté.

La jeune femme a adopté le jeu de la superposition dans son dressing associant matières et couleurs pour un look qui se veut d'inspiration Worker en y parsemant poésie et féminité, une envie d'épure flottant dans l'air du temps.

Emmanchures oversize, longueurs et volumes accentués, on y retrouve fits et détails de saison (cape, chino pant imprimé, coudières et capuches, sherpa intérieure) .

Les matières réconfortantes apportent confort, chaleur et protection : contrecollé, velours, doublure sherpa, nylon.

Elles se veulent aussi lavées, aux aspects rustiques ou authentiques, comme usées par le temps et les éléments naturels : chiné, neppy, intersia et tricotages fantaisies.

Pour venir animer le tout, les trims façon cuir «naturel» renforcent l'attachement à la simplicité et à la nature, fil conducteur de la saison.

La palette de couleurs s'exprime en deux gammes, toutes deux basées sur des tons naturels, le Cord et le Beige.

La première est associée au Dark grey et Pearl pink, poésie d'hiver à l'accent Honey, douceur automnale.

La deuxième, ciel d'hiver et ses derniers rayons de soleil joue les Storm blue, Dark brown et Hot coral.



Slide to the Wild Side

# TRIP

Women Collection



**SCARF**  
D2EZURUM

**BEANIE**  
D2ELISTA

**SWEATER**  
D2TAROUCA

**SKIRT**  
D2TAVDA



**T-SHIRTS**  
D2TANETE

**JACKETS**  
D2TINJA

**BEANIE**  
D2ENNA

**SWEATER**  
D2TAWI

**SHIRTS**  
D2TUXTLA

**SHORTS**  
D2TRAPANI



**CHAPKA**  
D2EISENS

**SWEATER**  
D2TIBIRI

**T-SHIRT**  
D2TONGSI

**JACKET**  
D2DEBARCA

**PANTS**  
D2TOPOLA



**CHAPKA**  
D2EISENS

**T-SHIRT**  
D2TRILIJ

**FLEECE**  
D2TRIBSEES

**OVERALL**  
DUNGAREE



**FLEECE**  
D2THANYA

**T-SHIRT**  
D2THALWIL

**DENIM**  
D2DEBRADRY



**BEANIE**  
D2EBOLI

**SCARF**  
D2ERMARA

**DRESSE**  
D2TAUBATE

**BAG**  
D2ESTELI

TRIP 1<sup>st</sup> Delivery

# TRIP

Women Collection



**SWEATER**  
D2DJENNE

**JACKET**  
D2TSNIKAPA

**SHIRT**  
D2TULUA

**SKIRT**  
D2TONACA



**T-SHIRTS**  
D2TINHOU

**FLEECE**  
D2TRYUGA

**PANTS**  
D2TUYHOA

**BACKPACK**  
D2ESILINGA



**BEANIE**  
D2ENNA

**SWEATER**  
D2TEANNA

**T-SHIRT**  
D2TOLLOW

**PANTS**  
D2DEBRADARK





**T-SHIRT**  
D2TAZNAK

**JACKET**  
D2TURAW

**DENIM**  
D2DEBRADRY



**T-SHIRT**  
D2TERLIZZI

**SWEATER**  
D2TIASSALE

**PANTS**  
D2TUYHOA

**HANDBAG**  
D2EVODA



**BEANIE**  
D2ENNA

**DRESSE**  
D2TAMERA

**BAG**  
D2ESTELI

# DOWNTOWN

Women Collection



The Downtown Winter 2012/2013 collection, takes inspiration from the concept of “Casual Fridays” whilst immersing itself in the “Prep school” culture born out of 1950s America.

Oxbow brings its own modern twist to the trend, mixing it with surfing values and folk influences. A touch of an American Indian vibe is perfect for playing down the Harvard grad look, and results in a unique “Preppy casual” style.

The Downtown silhouettes includes: a stylish, thick, jacquard jacket with geometric patterning- which reflects items from the accessories line like the jacquard, knit, bags, floppy neck-tie tops which come in micro prints with a retro feel, and an open-knit round necked sweater which offers an “effortless chic” look, whilst still being casual and contemporary.

Feminine fabrics which are natural, floaty, or stretchy (such as the tencel/rayon/bamboo and cotton twill/spandex mixes) take the spotlight this season, contrasted with the enveloping warmth of the heavy gauge knits. Besides these there are also the essentials, the soft, supple poplins and cotton twills, as well as the silicone washed jerseys.

The colors emphasize the “Preppy Casual” style. They are arranged in two ranges, one offering an introduction to the season’s warm, natural-based tones, such as emerald green and a Camel, played off against a second, more urban palette, featuring bright fuchsia, and Navy blue. The neutral colors, the Black, Heather grey and Cord are an essential part of both ranges traversing the two selections.

La collection Downtown Hiver 2012-2013, remet au gout du jour le concept du « Friday Wear » en nous immergeant dans un univers inspiré du look « prep school », style né aux Etats-Unis dans les années 1950.

Oxbow apporte un air de modernité à cette tendance en mélangeant les codes du surfwear avec des influences folkloriques d'inspiration Amérindiennes, idéales pour dédramatiser un look diplômé d'Harvard, en proposant ainsi son style unique «Preppy Casual».

La silhouette Downtown fait preuve de fantaisie stylée en associant un gros gilet jacquard aux motifs géométriques, relayée d'une ligne d'accessoires et sacs en maille jacquard avec un top fluide col cravate en micro imprimé, un rien rétro, ou un pull col rond en maille ajourée, pour une allure «chic l'air de rien», mais toujours décontractée et contemporaine.

Les matières féminines, fluides, naturelles ou «stretch» comme le tencel/rayon/bambou et le twill coton/élasthane sont à l'honneur cette saison, contrastées à des mailles grosses jauges enveloppantes et chaudes.

Du côté des essentiels, les popelines et les twill cotons sont souples et doux, les jerseys sont siliconés.

Les deux palettes de couleurs confirment le style «Preppy Casual». Elles s'articulent en deux gammes, proposant une entrée de saison aux nuances chaleureuses et naturelles axées sur un vert Emerald et un Camel, opposée à une pleine saison plus sage et citadine illustrée par un fushia Raspberry lumineux et un bleu Navy. Les coloris neutres et indispensables tel le Black, le gris chiné et le Cord sont transverses aux 2 gammes.



Preppy Casual

# DOWN TOWN

Women Collection



**BEANIE**  
D2ELIG

**SWEATER**  
D2DOLNY

**T-SHIRT**  
D2DOLINSK

**PANTS**  
D2DEBRAUSD

**BAG**  
D2ESEKA



**JACKET**  
D2DUNSTA

**SWEATER**  
D2DUTCHESS

**T-SHIRT**  
D2DYAR

**PANTS**  
D2DIZARBA

**BAG**  
D2ELBEI



**BEANIE**  
D2EULALIA

**SWEATER**  
D2DAMOUR

**JACKET**  
D2DINIGAT

**T-SHIRT**  
D2DIMNAT

**BAG**  
D2ELBEI

**PANTS**  
D2DAISYGREY



**CAP**  
D2EMERALD

**T-SHIRT**  
D2DIVACA

**JACKET**  
D2DAFENG

**SKIRT**  
D2DAMMAN



**JACKET**  
D2DOLYNA

**FLEECE**  
D2DAMIAN

**SHIRT**  
D2DAUGAVE

**T-SHIRT**  
D2DUNAHA

**PANTS**  
D2DAISYGREY

**BEANIE**  
D2ELBE



**BEANIE**  
D2ELBE

**SWEATER**  
D2DONABA

**DRESS**  
D2DABAS

**JACKET**  
D2DIADEMA

**BAG**  
D2EBELE



DT 1<sup>st</sup> Delivery

# DOWN TOWN

Women Collection



**SCARF**  
D2ENYING

**T-SHIRT**  
D2DOLINSK

**SWEATER**  
D2DAMOUR

**SKIRT**  
D2DROPHIC



**JACKET**  
D2DYAN

**SWEATER**  
D2DARGAZ

**BEANIE**  
D2ELIG

**PANTS**  
D2DEBRADRY



**SWEATER**  
D2DOWICE

**T-SHIRT**  
D2DARMANE

**GLOVES**  
D2ERDINA

**PANTS**  
D2DAISYRAW



**SWEATER**  
D2DOLNY



**BEANIE**  
D2ELISTA

**T-SHIRT**  
D2DIMNAT

**SKIRT**  
D2DESSALI



**JACKET**  
D2DIADEMA

**SHIRTS**  
D2DESSIE

**SWEATER**  
D2DROCHIA

**PANTS**  
D2DAISYRAW



**SWEATER**  
D2DOUCHEN

**SHIRT**  
D2DARICA

**PANTS**  
D2DABOU

# JACKETS



# TRIP JACKETS WOMEN

## D2TARFAYA

Hooded nylon jacket w/polar lining / Blouson nylon capuche doublé polaire

WJAC01

JULY 12

Smocked bottom & cuffs, fixed hood  
Ceinture & poignet smokés, capuche fixe

OXV042373

Sizes : 0 1 2 3 4 5

Composition :  
100% POLYESTER

Technical details :  
- Polyester 300T  
- Water-repellent 3k-3K  
- Fake fur inside pocket bag + hood



Dark shadow

Storm blue

## D2TSHIKAPA

Sleeveless padded jacket w/fixed hood / Doudoune sans manche capuche fixe

WJAC06

AUGUST 12

Fake fur in hood, chest pocket bi-flower  
Fourrure capuche, bi-flower poitrine

OXV042378

Sizes : 0 1 2 3 4 5

Composition :  
100% POLYESTER

Technical details :  
- Polyester 300T  
- Water-repellent 3k-3k

- Polar fleece lining  
- Polyester padding



Dark shadow



**D2TAOUNA** *Cotton parka w/fixed hood / Parka coton capuche fixe* **WJAC02**  
**JULY 12** *4 front pockets, sleeve pleats, sherpa lining hood & collar* **OXV042374**  
*4 poches devant, plis manche, sherpa capuche & col*

Sizes : 0 1 2 3 4 5

Composition : 100% COTTON

Technical details :  
 - Canvas 280gr  
 - Brushed yarn dyed check body lining  
 - 40gr padding



Beige

Dark shadow

**D2TURAW** *Cotton hooded jacket w/fur lining / Blouson chaud coton capuche fourrure* **WJAC04**  
**AUGUST 12** *Thick body lining, patched pockets, bottom rib* **OXV042376**  
*Doublure épaisse 120gr, poches plaquées, bord côte*

Sizes : 0 1 2 3 4 5

Composition : 100% COTTON

Technical details :  
 - Dobby coton 300gr  
 - Fur around hood

- Padding 120grw/quilted jersey lining body & hood  
 - Metal zip opening and button



Beige

Dark brown

**D2TINJA** *Fake cape in neppy woolens / Capeline en lainage neppy* **WJAC03**  
**JULY 12** *3/4 sleeves, front pocket, recycled buttons, leather pads* **OXV042375**  
*Manches 3/4, poches devant, boutons recyclés, pads cuir*

Sizes : 0 1 2 3 4 5

Composition : 40% WOOL, 50% POLYESTER, 4% VISCOSE, 4% ACRYLIC, 2% POLYAMIDE

Technical details :  
 - Neppy woolen 320gr  
 - Black chambray cotton lining



Heather grey

**D2DEBARCA** *Leather jacket w/ribbed collar / Blouson en cuir col montant rib* **WJAC13**  
**AUGUST 12** *Front patched pockets, leather pads & patch* **OXV042385**  
*Poches plaquées, patch & pads cuir*

Sizes : 0 1 2 3 4 5

Composition : PIG LEATHER

Technical details :  
 - Pig leather washed  
 - Monogram satin lining



Camel

Dark brown

**D2DUNSTA**

Feather down jacket w/fixed hood / Doudoune longue capuche fixe

WJAC12

SEPTEMBER 12

Mid-thigh lenght, leather patch & zip puller  
100% plume, longueur mi-cuisse, curseur & patch cuir

OXV042384

Sizes : 0 1 2 3 4 5

Composition :  
100% POLYAMIDE

Technical details :  
- Ripstop 52gr  
- Feather down padding  
- Monogramm embossed lining



Black

**D2DALOA**

Woolen coat collar / Manteau lainage uni col châle

WJAC11

AUGUST 12

Above knee lenght, quilted lining, leather patch  
Longueur dessus genoux, doublure matelassée

OXV042383

Sizes : 0 1 2 3 4 5

Composition :  
65% WOOL  
30% POLYESTER  
5% O.F

Technical details :  
- Plain color wool 430gr  
- 210T quilted lining



Black

**D2DIADEMA**

Woollen pea jacket, double buttoned opening / Caban lainage uni, double boutonnage

WJAC10

AUGUST 12

Thin quilted lining, leather patch  
Fine doublure matelassée, patch en cuir

OXV042382

Sizes : 0 1 2 3 4 5

Composition :  
65% WOOL  
30% POLYESTER  
5% O.F

Technical details :  
- Plain color wool 430gr  
- Quilted lining 210T



Grey

Dark night

**D2DINIGAT**

Buttoned woollen jacket, shawl collar / Veste boutonnée lainage, col châle

WJAC09

JULY 12

Ribbed bottom & cuffs, leather patch & pads  
Bord côte bas corps & manche, patch & pads en cuir

OXV042381

Sizes : 0 1 2 3 4 5

Composition :  
65% WOOL  
30% POLYESTER  
5% O.F

Technical details :  
- Diagonal structure wool  
- 640gr  
- No lining



Black

Navy



**D2DYAN**

*Hooded cotton parka w/polar lining / Parka capuche coton doublée polaire*

*WJAC07*

AUGUST 12

*Front pocket, removable hood, bi-flower embroidery  
Poche devant, capuche amovible, broderie bi-flower*

**OXV042379**

Sizes : 0 1 2 3 4 5

Composition :  
100% COTTON

Technical details :  
- Irregular canvas 305gr  
- Polar fleece lining body & padding  
- Sherpa hood lining



Navy



Black



Camel

**D2DOLYNA**

*Long hooded cotton parka / Parka longue coton capuche*

*WJAC08*

JULY 12

*Fixed hood, waist drawstring, big front pockets  
Capuche fixe, lien serrage taille, poches plaquées devant*

**OXV042380**

Sizes : 0 1 2 3 4 5

Composition :  
100% COTTON

Technical details :  
- Cotton twill 185gr  
- Water-repellent  
- Brushed tricot lining



Camel



Black



**D2DAFENG**

*Fake leather jacket w/pintucks / Blouson simili cuir col motard*

*WJAC14*

JULY 12

**Metal zipper, bi-flower embroidery**  
**Zip métal, broderie bi-flower, plis devant & dos**

**OXV042882**

Sizes : 0 1 2 3 4 5

Composition :  
100% POLYURETHANE

Technical details :  
- Polyurethane  
- Satin lining w/monogram print  
- Leather zip puller



Black

# SWEATERS



## D2TAROUCA

V-necked plain color sweater / Pull uni col V wording dos intarsia

WPUL02

JULY 12

Back intarsia wording, bi-flower embroidery at chest  
Broderie bi-flower poitrine

OXV042387

Sizes : 0 1 2 3 4 5

Composition :  
95% COTTON  
5% WOOL

Technical details :  
- Jersey gauge 12



Hot coral



Dark shadow



Storm blue



Pearl pink

## D2TAWI

3/4 sleeve neppy sweater w/elbow patch / Pull neppy manche 3/4 à coudière

WPUL01

JULY 12

Buttons at shoulder, bi-flower embroidery  
Boutons épaule, broderie bi-flower

OXV042386

Sizes : 0 1 2 3 4 5

Composition :  
97% COTTON  
3% VISCOSE

Technical details :  
- Neppy gauge 12  
- Fake leather elbow patch detail



Pearl pink



Heather grey

**D2TIBIRI**

*Neppy cardigan w/elbow patch / Gilet neppy coudière faux daim* **WPUL03**

JULY 12

*Front button tab opening, bi-flower embroidery*  
*Patte boutonnée devant, broderie bi-flower* **OXV042388**

Sizes : 0 1 2 3 4 5

Composition :  
97% COTTON  
3% VISCOSE

Technical details :  
- Jersey neppy gauge 12



Heather grey



Pearl pink

**D2TIASSALE**

*Turtleneck sweater 3/4 sleeves / Pull uni col roulé manches 3/4* **WPUL04**

SEPTEMBER 12

*Cable on sleeves, leather pad*  
*Torsades manches, pads cuir* **OXV042389**

Sizes : 0 1 2 3 4 5

Composition :  
72% COTTON  
28% WOOL

Technical details :  
- Jersey gauge 7



Storm blue



Dark brown



Cord



**D2TEANNA**

*Hood zipped sweater w/fur lining / Gilet zippé doublé fourrure* **WPUL05**

AUGUST 12

*Front cables, metal zipper, bi-flower embroidery*  
*Torsades devant, zip métal, broderie bi-flower poignet* **OXV042390**

Sizes : 0 1 2 3 4 5

Composition :  
53% COTTON  
26% ACRYLIC  
16% POLYESTER  
5% WOOL

Technical details :  
- Gauge 7  
- Micro fleece lining in off white



Dark brown



Honey



Beige



Black

**D2DJENNE**

*Zipped, turtleneck sweater polar lining / Veste maille zippée doublée polaire* **WPUL14**

SEPTEMBER 12

*Fancy knit, metal zipper, leather patch*  
*Tricotage fantaisie, col roulé, zip métal, patch cuir* **OXV042399**

Sizes : 0 1 2 3 4 5

Composition :  
100% COTTON

Technical details :  
- Heathered yarn for bi-color effect  
- Gauge 4



Dark shadow



Honey

**D2DONABA**

Lightweight, ribbed cardigan / Gilet léger boutonné en côte

WPUL07

JULY 12

Front button opening, round neck, bi-flower embroidery  
Volume court, broderie bi-flower, encolure ronde

OXV042392

Sizes : 0 1 2 3 4 5

Composition :  
55% COTTON  
45% VISCOSE

Technical details :  
- Jersey gauge 12  
- Garment dyed  
- Softner wash



Black



Navy

**D2DUTCHESS**

Plain color sweater w/front open work / Pull uni maille ajourée devant

WPUL08

JULY 12

Rounded neckline, buttoned cuff  
Encolure ronde, patte poignet boutonnée

OXV042393

Sizes : 0 1 2 3 4 5

Composition :  
55% COTTON  
45% VISCOSE

Technical details :  
- Jersey gauge 12  
- Garment dyed  
- Softner wash



Emeraude



Navy



Raspberry



Black

**D2DAMOUR**

Plain color sweater w/jacquard design / Pull uni motif jacquard pointel

WPUL10

JULY 12

Rounded neckline, 3/4 sleeve, back & cuff slit  
Encolure ronde, manches 3/4, fentes dos & poignet

OXV042395

Sizes : 0 1 2 3 4 5

Composition :  
95% COTTON  
5% WOOL

Technical details :  
- Jersey gauge 12  
- Softner wash  
- Bi-flower embroidery



Cord



Navy



Red rock



Black

**D2DARGAZ**

Double layer sweater w/dot design / Pull double épaisseur motif à pois

WPUL12

AUGUST 12

Flap chest pocket, buttoned chest tab, bi-flower embroidery  
Poche poitrine rabat, patte boutonnée, encolure ronde

OXV042397

Sizes : 0 1 2 3 4 5

Composition :  
72% COTTON  
28% WOOL

Technical details :  
- Jersey gauge 12



Raspberry



Navy

**D2DROCHIA**

Buttoned cardigan / Gilet boutonné col châle

WPUL13

AUGUST 12

Shawl collar, 2 small front pockets  
Col châle, petites poches devant

OXV042398

Sizes : 0 1 2 3 4 5

Composition :  
60% COTTON  
20% WOOL  
20% ACRYLIC

Technical details :  
- Jersey gauge 12



Red rock



Black

**D2DOLNY**

Plain & warm turtleneck sweater / Pull uni col roulé

WPUL11

AUGUST 12

Rice knitting, bi-flower embroidery  
Maille point de riz, broderie bi-flower

OXV042396

Sizes : 0 1 2 3 4 5

Composition :  
72% COTTON  
28% WOOL

Technical details :  
- Rice knitting  
- gauge 3



Cord



Cord



Red rock



Navy



Black

**D2DOUCHEN**

Turtleneck, heathered sweater / Pull chaud chiné col roulé

WPUL09

AUGUST 12

Waist belt, button for collar closure, bi-flower embroidery  
Ceinture taille, bouton fermeture col, broderie bi-flower

OXV042394

Sizes : 0 1 2 3 4 5

Composition :  
50% COTTON  
35% ACRYLIC  
15% POLYAMIDE

Technical details :  
- Heathered yarn  
- Gauge 3



Navy



Grey



Red rock

**D2DOWICE**

Heavy zipped sweater w/jacquard design / Veste zippée grosse maille jacquard

WPUL15

AUGUST 12

Shawl collar, belt, side pockets, jersey lining  
Col châle, ceinture, poches côté, doublure jersey

OXV042400

Sizes : 0 1 2 3 4 5

Composition :  
60% COTTON  
20% WOOL  
20% ACRYLIC

Technical details :  
- Jersey gauge 3



Cord



Cord



Navy



# FLEECEES



## D2THANYA

Short sleeve fleece, loose fit / Sweat ample manche courte

WSWE03

JULY 12

Heathered yarn, side pockets, round neck, raw edge finish  
Molleton chiné, encolure ronde, finitions couture roulottées

OXV042343

Sizes : 0 1 2 3 4 5

Composition :  
65% COTTON  
35% POLYESTER

Technical details :  
- Fleece 360gr  
- Brushed inside  
- Bi-flower embroidery



Pearl pink



Storm blue

## D2TALARA

Hooded fleece w/front patched bi-flower / Sweat capuche bi-flower patché

WSWE01

JULY 12

Stretch, kangaroo pocket  
Poche kangourou, col boutonné

OXV042341

Sizes : 0 1 2 3 4 5

Composition :  
95% ORGANIC COTTON  
5% ELASTANE

Technical details :  
- Stretch fleece 320gr  
- Sueded  
- recycled buttons at collar



NATURALLY  
committed



Pearl pink



Dark brown

**D2TICLENI**

Plain colored hooded zipped fleece / Sweat capuche uni zippé print devant

WSWE02

JULY 12

Front screen print, fleece lining in hood  
Capuche doublée molleton, poche piping côté

OXV042342

Composition :  
95% ORGANIC COTTON  
5% ELASTANE

Technical details :  
- Sueded fleece 320gr

Sizes : 0 1 2 3 4 5



Heather grey



Black



Pearl pink

**D2TRIBSEES**

Hooded fleece w/double hood / Sweat enfilable double capuche

WSWE05

SEPTEMBER 12

Inside hood printed, patch pockets, bi-flower embroidery  
Intérieur capuche imprimé, broderie bi-flower, poches

OXV042345

Composition :  
65% COTTON  
35% POLYESTER

Technical details :  
- Fleece 360gr  
- Brushed inside  
- Thumb holes

Sizes : 0 1 2 3 4 5



Dark brown



Pearl pink

**D2TRIYUGA**

Hooded zipped bonded fleece / Veste unie contrecollée à capuche

WSWE04

SEPTEMBER 12

Fixed hood, patched pockets  
Capuche fixe, poches plaquées

OXV042344

Composition :  
outside: 100% COTTON  
backing: 100% POLYESTER

Technical details :  
- Bonded fleece 190gr

Sizes : 0 1 2 3 4 5



Cord



Dark brown





# DOWNTOWN FLEECES WOMEN

## D2DAMIAN

Hooded fleece w/half button tab / Sweat capuche 1/2 ouverture boutonnée

WSWE06

JULY 12

Front pockets, bi-flower embroidery  
Poche devant, broderie bi-flower

OXV042346

Sizes : 0 1 2 3 4 5

Composition :  
50% COTTON  
50% POLYESTER



Heather grey



Dark night

## D2DAGANA

Sueded wrapped over fleece / Sweat suédé cache coeur

WSWE08

AUGUST 12

Fitted garment, bi-flower embroidery  
Volume cintré, broderie bi-flower

OXV042348

Sizes : 0 1 2 3 4 5

Composition :  
70% COTTON  
30% POLYESTER

Technical details :  
- Brushed fleece 260gr  
- Sueded



Navy



Camel

# SHIRTS



## D2TUXTLA

LS yarn dyed check shirt w/front yoke / Tunique ML à carreaux

WSHR01

JULY 12

Front yoke w/pleats, rounded bottom  
Plastron devant avec plis, découpe bas arrondie

OXV042327

Composition :  
100% COTTON

Technical details :  
- Yarn dyed check 94gr

Sizes : 0 1 2 3 4 5



Pearl pink



Hot coral

Multicolore

## D2TULUA

LS buttoned shirt w/elbow patch / Chemise ML boutonnée à coudière

WSHR02

SEPTEMBER 12

Chest pockets, bi-flower embroidery  
Poches poitrine, coudière carreaux, broderie bi-flower

OXV042328

Composition :  
100% COTTON

Technical details :  
- Chambray 75gr  
- Slight crinkle effect on sleeves

Sizes : 0 1 2 3 4 5



Dark shadow

Storm blue

**D2DIOFOR**

LS plain color shirt w/pintucks / Chemise unie ML avec plis fantaisie

WSHR03

JULY 12

Hidden front buttoned tab, bi-flower embroidery  
Patte cachée devant, broderie bi-flower

OXV042329

Composition : 100% COTTON  
Technical details :  
- Poplin 95gr  
- Silicon wash

Sizes : 0 1 2 3 4 5



White

Black

Navy

**D2DESSIE**

Yarn dyed striped long-sleeved shirt / Chemise rayée manches longues

WSHR03B

AUGUST 12

Pintucks details front & back, bi-flower embroidery  
Détails plis devant & dos, broderie bi-flower

OXV042880

Composition : 100% COTTON  
Technical details :  
- Stripped poplin 140gr  
- Silicon wash

Sizes : 0 1 2 3 4 5



Navy

**D2DAUGAVE**

LS yarn dyed check shirt / Chemise ML carreaux cintrée

WSHR04

JULY 12

Chest pockets, fitted shape, contrasted fabrics  
Poches poitrine, cintrée, empiècement contrasté

OXV042337

Composition : 100% COTTON  
Technical details :  
- Yarn dyed check 97gr  
- Silicon wash

Sizes : 0 1 2 3 4 5



Emeraude

Raspberry

**D2DARICA**

MICRO FOLK sleeveless printed top / Top fluide imprimé MICRO FOLK

WSHR07

AUGUST 12

Light & floaty fabric, tie closure  
Matière légère et fluide, fermeture cravate

OXV042940

Composition : 65% VISCOSE 35% COTTON  
Technical details :  
- Poplin 90gr  
- Micro folk print

Sizes : 0 1 2 3 4 5



Navy

Cord

# T-SHIRTS



## D2TONGSI

SS rounded neck t-shirt, tree print / Tee MC col rond print sapin

WTSH01

JUNE 12

OXV042401

Sizes : 0 1 2 3 4 5

Composition :  
100% ORGANIC COTTON

Technical details :  
- Jersey 145gr  
- Peach finish



Pearl pink



Cord

Dark shadow

## D2TOLLOW

SS V-necked t-shirt / Tee-shirt MC col V

WTSH02

JUNE 12

OXV042402

Sizes : 0 1 2 3 4 5

Pigment print w/ chose of 2 prints  
Sérigraphie pigmentaire, 2 marquages au choix

Composition :  
100% ORGANIC COTTON

Technical details :  
- Jersey 145gr  
- Peach finish



Cord



Black



Dark shadow

Hot coral

**D2TOSSA**

SS t-shirt w/chest pocket with pearls / T-shirt MC poche à perles

WTSH07

JULY 12

Back metal zipper, drilled binding  
Zip métal dos, colletage vrillé,

OXV042407

Sizes : 0 1 2 3 4 5

Composition :  
52% COTTON  
48% POLYESTER

Technical details :  
- Heathered jersey 150gr



Storm blue

Dark shadow

**D2TANETE**

LS v-necked t-shirt w/front print / T-shirt ML col V forme évasée

WTSH04

JULY 12

Chest pocket, fitted sleeves & floaty shape  
Poche poitrine, manche fittée & volume corps ample

OXV042404

Sizes : 0 1 2 3 4 5

Composition :  
100% ORGANIC COTTON

Technical details :  
- Jersey 130gr  
- Silicon wash



Dark brown

Storm blue

Cord



**D2TAZNAK**

LS rounded neck t-shirt feather print / T-shirt ML col rond print plume

WTSH03

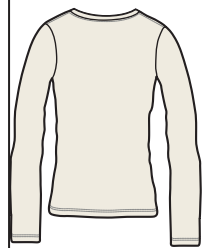
JULY 12

OXV042403

Sizes : 0 1 2 3 4 5

Composition :  
100% ORGANIC COTTON

Technical details :  
- Jersey 130gr  
- Silicon wash



Pearl pink

Dark brown

Cord

Hot coral



**D2THALWIL**

LS rounded neck t-shirt photoprint / T-shirt ML col rond photoprint

WTSH05

JULY 12

Side string, fancy collar finishing  
Lien côté, finition col roulotée

OXV042405

Sizes : 0 1 2 3 4 5

Composition :  
100% ORGANIC COTTON

Technical details :  
- Jersey 130gr  
- Silicon wash



Cord

Dark shadow

Heather grey

**D2TERLIZZI**

LS t-shirt dream catcher photoprint / T-shirt ML print dream catcher

WTSH09

SEPTEMBER 12

Rounded neckline, chest pocket, long  
Encolure ronde, poche poitrine, volume long

OXV042409

Sizes : 0 1 2 3 4 5

Composition :  
100% COTTON

Technical details :  
- Jersey 160gr  
- Bi-flower embroidery



Cord

Dark shadow

**D2TINHOU**

LS heathered t-shirt w/print / Tee-shirt ML chiné print devant

WTSH12

SEPTEMBER 12

Long lenght  
Volume long

OXV042412

Sizes : 0 1 2 3 4 5

Composition :  
52% COTTON  
48% POLYESTER

Technical details :  
- Jersey 150gr  
- Heathered



Storm blue

Dark shadow

**D2TIKVINE**

LS t-shirt w/front cable / T-shirt ML tresse devant

WTSH10

SEPTEMBER 12

Rounded neckline front & back, fitted sleeves  
Encolure ronde devant & dos, manches fittées

OXV042410

Sizes : 0 1 2 3 4 5

Composition :  
100% COTTON

Technical details :  
- Jersey 160 gr  
- Silicon wash  
- Bi-flower embroidery



Storm blue

Dark shadow

Cord

**D2TRAKAI**

LS boat necked t-shirt / T-shirt ML encolure bateau

WTSH06

SEPTEMBER 12

DREAM screen print  
Séigraphie DREAM

OXV042406

Sizes : 0 1 2 3 4 5

Composition :  
100% ORGANIC COTTON

Technical details :  
- Jersey 130gr  
- Silicon wash



Storm blue

Dark shadow

Cord



**D2TUKRA**

LS V-necked printed tee / Tee-shirt ML col V imprimé

WTSH25

JULY 12

Micro trip print, plain color sleeves  
Imprimé micro trip, bas de manche uni

OXV042900

Sizes : 0 1 2 3 4 5

Composition :  
100% COTTON

Technical details :  
- Jersey 160gr  
- Garment over dyed for used & faded look



Pearl pink

Dark brown

**D2TRILIJ**

Yarn dyed striped tank top / Débardeur stretch rayé

WTSH08

JULY 12

Back macramet yoke  
Empiècement dos en macramé

OXV042408

Sizes : 0 1 2 3 4 5

Composition :  
92% VISCOSE  
8% ELASTANE

Technical details :  
- Stripped jersey stretch  
- Macramet back



Honey

Storm blue

**D2TANNA**

LS V necked t-shirt, striped / T-shirt ML col V rayé stretch

WTSH11

AUGUST 12

Plain chest pocket, square & oversized shape  
Poche poitrine unie, forme carrée actuelle & ample

OXV042411

Sizes : 0 1 2 3 4 5

Composition :  
92% VISCOSE  
8% ELASTANE

Technical details :  
- Stretch jersey w/stripes  
- 210gr



Storm blue

Honey



**D2DOLINSK**

SS t-shirt w/corporate print / T-shirt MC print corporate

WTSH13

JUNE 12

Rounded neck, foil print  
Encolure ronde, sérigraphie foil

OXV042413

Composition :  
100% ORGANIC COTTON

Technical details :  
- Jersey 145gr  
- Peach finish

Sizes : 0 1 2 3 4 5



Emeraude



Raspberry



Black



Cord

**D2DUNAHA**

SS V-necked t-shirt w/2 prints / Tee MC col V 2 prints

WTSH14

JUNE 12

Print Indie or Monty  
Sérigraphie Indie où Monty

OXV042414

Composition :  
100% ORGANIC COTTON

Technical details :  
- Jersey 145gr  
- Peach finish

Sizes : 0 1 2 3 4 5



Cord



Navy



Dark heather grey



Emeraude

**D2DARMANE**

LS t-shirt w/necklace print / T-shirt ML print COLLIER

WTSH15

JULY 12

Rounded neckline  
Encolure ronde

OXV042415

Composition :  
100% ORGANIC COTTON

Technical details :  
- Jersey 130gr  
- Silicon wash

Sizes : 0 1 2 3 4 5



Black



Red rock



Cord



Emeraude

**D2DUPNITSA**

LS t-shirt w/shoulder print / T-shirt ML forme évasée, print épaule

WTSH16

SEPTEMBER 12

Rounded neck, fitted sleeves & floaty body  
Encolure ronde, manche fittée

OXV042416

Composition :  
100% ORGANIC COTTON

Technical details :  
- Jersey 130gr  
- Silicon wash

Sizes : 0 1 2 3 4 5



Red rock



Navy



Cord

**D2DELPHES**

3/4 sleeve V necked t-shirt GEO print / T-shirt M 3/4 col V print GEO

WTSH17

JULY 12

Oversized shape  
Forme ample

OXV042417

Composition :  
100% ORGANIC COTTON

Technical details :  
- Jersey 145gr  
- Peach finish

Sizes : 0 1 2 3 4 5



Dark heather grey



Cord



Navy

**D2DRAMMEN**

LS plain color turtlenecked t-shirt / T-shirt ML col roulé uni

WTSH18

JULY 12

Soft fabric, easy for layering

Matière douce & confortable pour superposition

Composition :  
96% VISCOSE  
4% ELASTANE

Technical details :  
- Jersey 230gr stretch

Sizes : 0 1 2 3 4 5



Navy



Black



Heather grey

**D2DOUVRES**

LS plain color wrap over t-shirt / T-shirt ML uni cache-coeur

WTSH22

SEPTEMBER 12

Bi-flower embroidery  
Broderie bi-flower

OXV042422

Composition :  
96% VISCOSE  
4% ELASTANE

Technical details :  
- Jersey stretch 230gr

Sizes : 0 1 2 3 4 5



Raspberry



Navy



Black

**D2DIMNAT**

LS raglan t-shirt w/burned out print / T-Shirt ML raglan print décoré

WTSH19

JULY 12

Floaty shape, rounded neck

Matière fluide, féminin et sobre, encolure ronde

Composition :  
55% COTTON  
45% POLYESTER

Technical details :  
- Jersey 160gr

Sizes : 0 1 2 3 4 5



Black



Raspberry



Heather grey

**D2DIYAR**

LS printed stretch t-shirt / T-shirt ML stretch imprimé pois

WTSH24

JULY 12

Boat neck opening, back neck drop  
Enclure bateau, goutte dos, volume près du corps

**OXV042424**

Sizes : 0 1 2 3 4 5

Composition :  
95% ORGANIC COTTON  
5% ELASTANE

Technical details :  
- Jersey stretch 170gr



Navy

Cord

**D2DIVAGA**

3/4 sleeve jacquard t-shirt / T-shirt jacquard manches 3/4

WTSH21

AUGUST 12

Small chest pocket, back slit, bi-flower embroidery  
Poche poitrine, fente dos, broderie bi-flower

**OXV042421**

Sizes : 0 1 2 3 4 5

Composition :  
96% COTTON  
4% ELASTANE

Technical details :  
- Plain color jacquard 110gr



Navy

Black

Cord



# PANTS



## D2TOPOLA

JULY 12

Fit : NEW CHINO

Sizes : 26 27 28 29 30 31  
32 33 34

MARKETING



PUSH

MICRO TRIP printed chino pant / Chino imprimé MICRO TRIP en twill

WPAN08

OXV042366

Fly buttons, bi-flower embroidery  
Braguette boutonnée, broderie bi-flower

Composition :  
100% COTTON

Technical details :  
- Twill 185gr  
- Garment dyed



Pearl pink



Dark brown

## D2TUYHOA

SEPTEMBER 12

Fit : Straight LW L33

Sizes : 26 27 28 29 30 31  
32 33 34

Stretch corduroy pant, regular LW fit / Pantalon velours stretch regular LW

WPAN09

OXV042367

Fly button, corduroy velvet  
Braguette boutonnée, velours 1000 raies

Composition :  
98% COTTON  
2% ELASTANE

Technical details :  
- Stretch corduroy 270gr  
- Heavy stone wash



Dark brown



Honey

Sizes : 26 27 28 29 30 31  
32 33 34

Composition :  
100% COTTON

Technical details :  
- Canvas 280gr  
- Printed pocket bags



Dark shadow



Beige



# DOWNTOWN PANTS WOMEN



## D2DIZARBA

5 pocket stretch twill pant / Pantalon 5 poches stretch

WPAN10

JULY 12

Regular low waist fit, bi-flower embroidery  
Fit regular low waist, broderie bi-flower

OXV042368

Fit : Straight LW L33

Sizes : 26 27 28 29 30 31  
32 33 34

Composition :  
97% COTTON /  
3% ELASTANE

Technical details :  
- Twill stretch 280gr  
- Silicon soft wash



Camel



Navy



Black

## D2DABOU

Stretch plain color chino pant / Pantalon chino stretch uni

WPAN11

AUGUST 12

Back piped pockets  
Poches passepoilées dos

OXV042369

Fit : NEW CHINO

Sizes : 26 27 28 29 30 31  
32 33 34

Composition :  
97% COTTON /  
3% ELASTANE

Technical details :  
- Stretch twill 280gr  
- Straight fit with slightly filled bottom leg



Navy



Black



Camel

**D2DAISYRAW**

Raw Blue skinny fit denim pant / Pant denim skinny raw blue

WPAN01

JULY 12

Leather patch, stretch  
Jacron cuir, stretch

OXV042359

Fit : Skinny LW L32

Composition :  
98% COTTON  
2% ELASTANE

Sizes : 26 27 28 29 30 31  
32 33 34



Raw

**D2DAISYGRE**

Skinny fit denim pant, grey color / Pant denim skinny fit gris foncé

WPAN02

JULY 12

Leather patch, stretch  
Jacron cuir, stretch

OXV042360

Fit : Skinny LW L32

Composition :  
98% COTTON  
2% ELASTANE

Sizes : 26 27 28 29 30 31  
32 33 34

Technical details :  
- Stretch denim 10oz  
- Tagging on waistband  
- Oily handfeel



Winter grey

**D2DEBRADAR**

Dark used straight LW denim pant / Pant denim straight LW dark used

WPAN03B

JULY 12

Leather patch, dark ground slightly washed  
Jacron cuir, base foncée légèrement usée

OXV042906

Fit : Straight LW L33

Composition :  
98% COTTON  
2% ELASTANE

Sizes : 26 27 28 29 30 31  
32 33 34

Technical details :  
- Stretch denim



Dark used

**D2DEBRADRY**

Straight LW denim pant / Pant denim straight LW

WPAN03

JULY 12

Leather patch, slight crinkle effect  
Jacron cuir, effet légèrement froissé

OXV042361

Fit : Straight LW L33

Composition :  
83% COTTON  
16% POLYESTER  
1% ELASTANE

Sizes : 26 27 28 29 30 31  
32 33 34

Technical details :  
- 9 oz denim stretch w/blue Black coating



Dry tumbled



**D2DEBRAUSD**

*Straight fit used black denim pant / Pant denim straight LW black*

WPAN13

JULY 12

*Leather patch  
Jacron cuir*

**OXV042912**

**Fit : STRAIGHT**

Composition :  
100% COTTON

Technical details :  
- Cotton denim 11, 5 oz

Sizes : 26 27 28 29 30 31  
32 33 34



Dark used

**D2DEBRABRU**

*Straight fit denim pant, check inside / Pant denim straight carreaux envers*

WPAN04

SEPTEMBER 12

*Leather patch  
Jacron cuir*

**OXV042362**

**Fit : STRAIGHT**

Composition :  
99% COTTON  
1% ELASTANE

Technical details :  
- Stretch denim 10,75oz  
- Check print inside

Sizes : 26 27 28 29 30 31  
32 33 34



Urban brut





## D2DIANADAR

20 oz regular fit denim pant / Pant denim 20 oz regular fit

WPAN06

SEPTEMBER 12

Leather patch, heavy fabric  
Jacron cuir, matière robuste

**OXV042364**

Fit : **REGULAR MR L32**

Sizes : 26 27 28 29 30 31  
32 33 34

Composition :  
100% COTTON

Technical details :  
- 20 oz denim



Dark worn in

## D2DUNGAREE

Denim dungaree w/check print inside / Salopette en denim carreaux envers

WPAN07

SEPTEMBER 12

Fit : **REGULAR MR L32**

Sizes : 26 27 28 29 30 31  
32 33 34

Composition :  
99% COTTON  
1% ELASTANE

Technical details :  
- Stretch denim 10,75 oz  
- Check print backside

**OXV042365**



Urban brut

# DRESSES & SKIRTS



## D2TAMERA

LS yarn dyed check dress / Robe tunique ML à carreaux

WDRE01

JULY 12

Front yoke with pintucks  
Découpe plastron plis devant

OXV042349

Sizes : 0 1 2 3 4 5

Composition :  
100% COTTON

Technical details :  
- Yarn dyed chek twill 155gr  
- Light brushed



Storm blue

Honey

## D2TAUBATE

Mixed knit & printed twill dress / Robe mélange maille & twill imprimé

WDRE03

JULY 12

String on top sleeves, adjusted waist, mid-thigh length  
Liens dessus manches, broderie bi-flower, mi-cuisse

OXV042351

Sizes : 0 1 2 3 4 5

Composition :  
55% COTTON  
45% VISCOSE

Technical details :  
- Gauge 12 top body & sleeve  
- Printed twill for bottom



Dark brown

**D2TESSAOUA**

*Turtleneck sweater dress / Robe pull col roulé mi-cuisse*

WDRE02

SEPTEMBER 12

**Fancy knit on sleeves & top body**  
Tricotage fantaisie manches & haut

**OXV042350**

Sizes : 0 1 2 3 4 5

Composition :  
60% COTTON  
20% WOOL  
20% ACRYLIC

Technical details :  
- Jersey gauge 5



Dark brown

**D2TAVDA**

*Mid-thigh cotton twill printed skirt / Jupe imprimée micro trip en coton*

WSKT04

JULY 12

**Mid-thigh length, side zip opening**  
Mi-cuisse, zip ouverture coté

**OXV042907**

Sizes : 0 1 2 3 4 5

Composition :  
100% COTTON

Technical details :  
- Twill 185gr  
- Garment dyed



Pearl pink



Dark brown

**D2TONACA**

*Stretch corduroy mini skirt / Mini jupe velours stretch*

WSKT01

SEPTEMBER 12

**Front patched pockets, back martingale, Oxbow embroidery**  
Poches plaquées devant, martingale dos, broderie oxbow

**OXV042356**

Sizes : 0 1 2 3 4 5

Composition :  
98% COTTON  
2% ELASTANE

Technical details :  
- Corduroy 270gr



Dark brown



Honey



**D2DABAS**

LS plain colored dress / Robe MLunie matière structurée

WDRE04

JULY 12

Hidden front buttoned tab, hip belt  
Patte boutonnée cachée devant, lien hanche

OXV042352

Composition :  
100% COTTON

Technical details :  
- Dobby vertical stripe 140gr  
- Softner wash

Sizes : 0 1 2 3 4 5



Emeraude



Navy



Black

**D2DAMMAN**

Plain color cotton twill skirt / Jupe unie en twill

WSKT02

JULY 12

Above knee length, side zip, pleat details  
Longueur dessus genoux, zip côté, détails plis

OXV042357

Composition :  
100% COTTON

Technical details :  
- Twill 185gr  
- Silicon wash  
- No lining

Sizes : 0 1 2 3 4 5



Camel



Black

**D2DEBICA**

Knitted LS dress / Robe en maille double face

WDRE06

SEPTEMBER 12

Double layer knitting, mid-thigh, bi-flower embroidery  
Motif intarsia, mi-cuisse, broderie bi-flower

OXV042354

Composition :  
72% COTTON  
28% WOOL

Technical details :  
- Gauge 12

Sizes : 0 1 2 3 4 5



Navy



Black

**D2DROPHIC**

Yarn dyed striped skirt / Jupe en rayure tissée

WSKT02B

AUGUST 12

Mid-thigh length, bi-flower embroidery  
Zip ouverture côté, mi-cuisse, broderie bi-flower

**OXV042881**

Sizes : 0 1 2 3 4 5

Composition :  
100% COTTON

Technical details :  
- Yarn dyed stripes 140gr  
- No lining



Navy

**D2DESSALI**

Printed MICRO FOLK tencel skirt / Jupe imprimée MICRO FOLK en tencel

WSKT03

AUGUST 12

Elasticated waist, front pockets, above knee length  
Ceinture smokée, poches devant, dessus genoux

**OXV042358**

Sizes : 0 1 2 3 4 5

Composition :  
55% TENCEL  
35% RAYON  
10% BAMBOO FIBER

Technical details :  
- Printed twill 170gr  
- Silicon wash



Cord

Navy



# BEACH



## D2TIJUANA

INFINITY band and midi bottom / Bandeau et culotte INFINITY

WBEA01

MAY 12

Band with removable foams, back knot  
Bandeau mousses amovible, noeud foulard dos

OXV042725

Sizes : 0 1 2 3 4 5

Composition :  
80% POLYAMIDE  
20% ELASTANE

Technical details :  
- Microfibre 195 gr  
- Liens charmeuse unie / Plain satin strings



Multicolore

## D2TANGERA

INFINITY push up and bikini with knots / Push up et bikini foulard INFINITY

WBEA05

MAY 12

Air caution gradual cups for quick dry and comfort  
Coque progressive coussins d'air séchage rapide et confort

OXV042729

Sizes : 0A 1A 1B 2B 2C  
3C 4C

Composition :  
80% POLYAMIDE  
20% ELASTANE

Technical details :  
- Microfibre 195 gr  
- Liens charmeuse unie / Plain satin strings



Multicolore

**D2TIKRIT**

MICROTRIP triangle and midi bottom / Triangle et culotte midi MICROTRIP

WBEA02

MAY 12

Removable foams, coloured lining  
Mousses amovibles, doublure couleur

OXV042726

Sizes : 0 1 2 3 4 5

Composition :  
80% POLYAMIDE  
20% ELASTANE

Technical details :  
- Microfibre 195 gr



Black

**D2THIADIA**

MICROTRIP band and maxi bottom / Bandeau et culotte maxi MICROTRIP

WBEA06

MAY 12

Removable foams, coloured lining  
Mousses amovibles, doublure couleur

OXV042730

Sizes : 0 1 2 3 4 5

Composition :  
80% POLYAMIDE  
20% ELASTANE

Technical details :  
- Microfibre 195 gr



Black

**D2TUPIZA**

MICRO TRIP boardshort / Boardshort MICRO TRIP

WBSH01

MAY 12

Lycra fly, side pocket  
Braguette lycra, poche côté

OXV042723

Fit : short 28cm = 11 in

Sizes : 26 28 30 32 34



Composition :  
100% RECYCLED  
POLYESTER



Black



**D2TYCHY**

NEW CHECKY triangle and sexykini / Triangle et sexykini NEW CHECKY

WBEA04

MAY 12

Wrapped adjustable triangle, removable foams  
Triangle drapé coulissant, mousses amovibles

**OXV042728**

Sizes : 0 1 2 3 4 5

Composition :  
80% POLYAMIDE  
20% ELASTANE

Technical details :  
- Microfibre 195 gr  
- Liens charmeuse unie / Plain satin strings



Multicolore

**D2TOCOA**

NEW CHECKY triangle and maxi bottom / Triangle et culotte maxi NEW CHECKY

WBEA03

MAY 12

Multiposition top triangle band, removable foams  
Haut multiposition triangle bandeau, mousses amovibles

**OXV042727**

Sizes : 0 1 2 3 4 5

Composition :  
80% POLYAMIDE  
20% ELASTANE

Technical details :  
- Microfibre 195 gr  
- Liens charmeuses unis / Plain satin strings



Multicolore

**D2TRANG**

NEW CHECKY elasticated volley short / Volley short élastiqué NEW CHECKY

WV0L01

MAY 12

Fit : short 22cm = 8 1/2 in

Sizes : 26 28 30 32 34

Composition :  
100% RECYCLED  
POLYESTER



Multicolore

## DUNGAREE



WPAN07 - D2DUNGAREE - URBAN BRUT

## SKINNY LW - L32



WPAN01 - D2DAISYRAW - RAW



WPAN02 - D2DAISYGRE - WINTER GREY

# WOMEN DENIM FITS

## STRAIGHT LW - L33



WPAN03 - D2DEBRADRY - DRY TUMBLD



WPAN04 - D2DEBRABRU - URBAN BRUT



WPAN03B - D2DEBRADAR - DARK USED



WPAN013 - D2DEBRAUSD - DARK USED

## REGULAR MR - L33



WPAN06 - D2DIANADAR L33 - DARK WORN IN

# OVERVIEW



TRIP

JACKETS

Delivery starts  
JULY 12



WJAC01 - TARFAYA - P22



Storm blue



WJAC02 - TAOUNA - P23



Dark shadow



WJAC03 - TINJA - P23



WJAC13 - DEBARCA - P23



Dark brown

TRIP

SWEATERS

Delivery starts  
JULY 12



WPUL02 - TAROUCA - P27



Dark shadow



Storm blue



Pearl pink



Dark brown



WPUL01 - TAWI - P27



Heather grey



WPUL03 - TIBIRI - P28



Pearl pink

TRIP

FLEECES

Delivery starts  
JULY 12



WSWE03 - THANYA - P31



Storm blue



WSWE01 - TALARA - P31



Dark brown



WSWE02 - TICLENI - P32



Pearl pink



Black

TRIP

SHIRTS

Delivery starts  
JULY 12



WSHR01 - TUXTLA - P34



Multicolore



Hot coral

TRIP

T-SHIRTS

Delivery starts  
JUNE 12



WTSH01 - TONGSI - P36



Pearl pink



Cord



WTSH02 - TOLLOW - P36



Cord



Dark shadow



Black

**TRIP** T-SHIRTS  
Delivery starts  
JULY 12



WTSH07 - TOSSA - P37



Storm blue



WTSH03 - TAZNAK - P37



Pearl pink



Hot coral



Dark brown



WTSH04 - TANETE - P37



Storm blue



WTSH05 - THALWIL - P37



Cord



WTSH25 - TUKRA - P39



Dark brown



WTSH08 - TRILIJ - P39



Storm blue

**TRIP** PANTS  
Delivery starts  
JULY 12



WPAN08 - TOPOLA - P43



Dark brown

**TRIP** SHORTS  
Delivery starts  
JULY 12



WSH001 - TRAPANI - P44



Beige

**TRIP** DRESSES  
Delivery starts  
JULY 12



WDRE01 - TAMERA - P49



Storm blue



WDRE03 - TAUBATE - P49

**TRIP** SKIRTS  
Delivery starts  
JULY 12



WSKT04 - TAVDA - P50



Dark brown



TRIP

JACKETS

Delivery starts  
AUGUST 12



WJAC06 - TSHIKAPA - P22

JACKETS

Delivery starts  
SEPTEMBER 12



WJAC04 - TURAW - P23



Dark brown

TRIP

SWEATERS

Delivery starts  
AUGUST 12



WPUL05 - TEANNA - P28



Honey



Black



Beige

SWEATERS

Delivery starts  
SEPTEMBER 12



WPUL04 - TIASSALE - P28



Dark brown



Cord



WPUL14 - DJENNE - P28



Dark shadow

TRIP

FLEECES

Delivery starts  
SEPTEMBER 12



WSWE05 - TRIBSEES - P32



Pearl pink



WSWE04 - TRIYUGA - P32



Dark brown

TRIP

SHIRTS

Delivery starts  
SEPTEMBER 12



WSHR02 - TULUA - P34



Dark shadow

TRIP

T-SHIRTS

Delivery starts  
SEPTEMBER 12



WTSH09 - TERLIZZI - P38



Dark shadow



WTSH12 - TINHOU - P38



Dark shadow



WTSH10 - TIKVINE - P38



Dark shadow



WTSH06 - TRAKAI - P38



Dark shadow



WTSH11 - TANNA - P39



Honey



TRIP

PANTS

Delivery starts  
SEPTEMBER 12



WPAN09 - TUYHOA - P43



Honey



WPAN06 - DIANADARK - P48



WPAN07 - DUNGAREE - P48

TRIP

DRESSES

Delivery starts  
SEPTEMBER 12



WDRE02 - TESSAOUA - P50

TRIP

SKIRTS

Delivery starts  
SEPTEMBER 12



WSKT01 - TONACA - P50



Honey

DOWNTOWN

JACKETS

Delivery starts  
AUGUST 12



WJAC10 - DIADEMA - P24



Dark night



WJAC09 - DINIGAT - P24



Navy



WJAC08 - DOLYNA - P25



Black



WJAC14 - DAFENG - P26

DOWNTOWN

SWEATERS

Delivery starts  
JULY 12



WPUL07 - DONABA - P29



Navy



WPUL08 - DUTCHESS - P29



Raspberry



Navy



Black



WPUL10 - DAMOUR - P29



Red rock



Navy



Black



WPUL11 - DOLNY - P30



Red rock



Navy



Black

DOWNTOWN

FLEECES

Delivery starts  
JULY 12



WSWE06 - DAMIAN - P33



Dark night

DOWNTOWN

SHIRTS

Delivery starts  
JULY 12



WSHR03 - DIOFOR - P35



Navy



Black



WSHR04 - DAUGAVE - P35



Emeraude

DOWNTOWN

T-SHIRTS

Delivery starts  
JUNE 12



WTSH13 - DOLINSK - P40



Raspberry



Cord



Black



WTSH14 - DUNAHA - P40



Cord



Emeraude



Dark heather grey

DOWNTOWN

T-SHIRTS

Delivery starts  
JULY 12



WTSH15 - DARMANE - P40



Red rock



Emeraude



Cord



WTSH17 - DELPHES - P41



Navy



Cord



WTSH18 - DRAMMEN - P41



Raspberry



Navy



Black



WTSH19 - DIMNAT - P41



Raspberry



Heather grey



WTSH24 - DIYAR - P42



Navy

DOWNTOWN

PANTS

Delivery starts  
JULY 12



WPAN10 - DIZARBA - P45



Navy



Black



WPAN01 - DAISYRAW - P46



WPAN02 - DAISYGREY - P46



WPAN03B - DEBRADARK - P46



WPAN03 - DEBRADRY - P46



WPAN13 - DEBRAUSD - P47

DOWNTOWN

DRESSES

Delivery starts  
JULY 12



WDRE04 - DABAS - P51



Navy



Black

DOWNTOWN

SKIRTS

Delivery starts  
JULY 12



WSKT02 - DAMMAN - P51



Black

DOWNTOWN

JACKETS

Delivery starts  
AUGUST 12



WJAC11 - DALOA - P24



WJAC07 - DYAN - P25



Camel



Black

JACKETS

Delivery starts  
SEPTEMBER 12



WJAC12 - DUNSTA - P24

DOWNTOWN

SWEATERS

Delivery starts  
AUGUST 12



WPUL12 - DARGAZ - P29



Navy



WPUL13 - DROCHIA - P30



Black



WPUL09 - DOUCHEN - P30



Grey



WPUL15 - DOWICE - P30



Navy



Red rock



Black

DOWNTOWN

FLEECES

Delivery starts  
SEPTEMBER 12



WSWE08 - DAGANA - P33



Camel

DOWNTOWN

SHIRTS

Delivery starts  
AUGUST 12



WSHR03B - DESSIE - P35



WSHR07 - DARICA - P35



Cord

DOWNTOWN

T-SHIRTS

Delivery starts  
AUGUST 12



WTSH16 - DUPNITSA - P40



Navy



WTSH22 - DOUVRES - P41



Navy



WTSH21 - DIVACA - P42



Navy



Cord



Black



Black

DOWNTOWN

PANTS

Delivery starts  
SEPTEMBER 12



WPAN11 - DABOU - P45



Camel



WPAN04 - DEBRABRUT - P47



Black

DOWNTOWN

DRESSES

Delivery starts  
SEPTEMBER 12



WDRE06 - DEBICA - P51



Black

DOWNTOWN

SKIRTS

Delivery starts  
AUGUST 12



WSKT02B - DROPHIC - P52



WSKT03 - DESSALI - P52



Navy



Name Nom	N° N°	Brand Marque	Group Famille	Page Page
DABAS	WDRE04	Textile	ROB	51
DABOU	WPAN11	Textile	PAN	45
DAFENG	WJAC14	Textile	VES	26
DAGANA	WSWE08	Textile	SWE	33
DAISYGREY	WPAN02	Textile	PAN	46
DAISYRAW	WPAN01	Textile	PAN	46
DALOA	WJAC11	Textile	VES	24
DAMIAN	WSWE06	Textile	SWE	33
DAMMAN	WSKT02	Textile	JUP	51
DAMOUR	WPUL10	Textile	CHA	29
DARGAZ	WPUL12	Textile	CHA	29
DARICA	WSHR07	Textile	CHE	35
DARMANE	WTSH15	Textile	TSH	40
DAUGAVE	WSHR04	Textile	CHE	35
DEBARCA	WJAC13	Textile	VES	23
DEBICA	WDRE06	Textile	ROB	51
DEBRABRUT	WPAN04	Textile	PAN	47
DEBRADARK	WPAN03B	Textile	PAN	46
DEBRADRY	WPAN03	Textile	PAN	46
DEBRAUSD	WPAN13	Textile	PAN	47
DELPHES	WTSH17	Textile	TSH	41
DESSALI	WSKT03	Textile	JUP	52
DESSIE	WSHR03B	Textile	CHE	35
DIADEMA	WJAC10	Textile	VES	24
DIANADARK	WPAN06	Textile	PAN	48
DIMNAT	WTSH19	Textile	TSH	41
DINIGAT	WJAC09	Textile	VES	24
DIOFOR	WSHR03	Textile	CHE	35
DIVACA	WTSH21	Textile	TSH	42
DIYAR	WTSH24	Textile	TSH	42
DIZARBA	WPAN10	Textile	PAN	45
DJENNE	WPUL14	Textile	CHA	28
DOLINSK	WTSH13	Textile	TSH	40
DOLNY	WPUL11	Textile	CHA	30
DOLYNA	WJAC08	Textile	VES	25
DONABA	WPUL07	Textile	CHA	29
DOUCHEN	WPUL09	Textile	CHA	30
DOUVRES	WTSH22	Textile	TSH	41

DOWICE	WPUL15	Textile	CHA	30
DRAMMEN	WTSH18	Textile	TSH	41
DROCHIA	WPUL13	Textile	CHA	30
DROPHIC	WSKT02B	Textile	JUP	52
DUNAHA	WTSH14	Textile	TSH	40
DUNGAREE	WPAN07	Textile	PAN	48
DUNSTA	WJAC12	Textile	VES	24
DUPNITSA	WTSH16	Textile	TSH	40
DUTCHESS	WPUL08	Textile	CHA	29
DYAN	WJAC07	Textile	VES	25
TALARA	WSWE01	Textile	SWE	31
TAMERA	WDRE01	Textile	ROB	49
TANETE	WTSH04	Textile	TSH	37
TANGERA	WBEA05	Textile	BAI	53
TANNA	WTSH11	Textile	TSH	39
TAOUNA	WJAC02	Textile	VES	23
TARFAYA	WJAC01	Textile	VES	22
TAROUCA	WPUL02	Textile	CHA	27
TAUBATE	WDRE03	Textile	ROB	49
TAVDA	WSKT04	Textile	JUP	50
TAWI	WPUL01	Textile	CHA	27
TAZNAK	WTSH03	Textile	TSH	37
TEANNA	WPUL05	Textile	CHA	28
TERLIZZI	WTSH09	Textile	TSH	38
TESSAOUA	WDRE02	Textile	ROB	50
THALWIL	WTSH05	Textile	TSH	37
THANYA	WSWE03	Textile	SWE	31
THIADIA	WBEA06	Textile	BAI	54
TIASSALE	WPUL04	Textile	CHA	28
TIBIRI	WPUL03	Textile	CHA	28
TICLENI	WSWE02	Textile	SWE	32
TIJUANA	WBEA01	Textile	BAI	53
TIKRIT	WBEA02	Textile	BAI	54
TIKVINE	WTSH10	Textile	TSH	38
TINHOU	WTSH12	Textile	TSH	38
TINJA	WJAC03	Textile	VES	23
TOCOA	WBEA03	Textile	BAI	55
TOLLOW	WTSH02	Textile	TSH	36

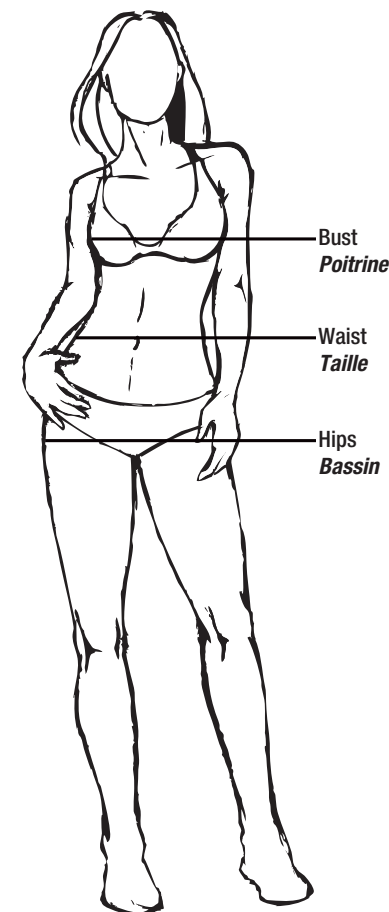
TONACA	WSKT01	Textile	JUP	50
TONGSI	WTSH01	Textile	TSH	36
TOPOLA	WPAN08	Textile	PAN	43
TOSSA	WTSH07	Textile	TSH	37
TRAKAI	WTSH06	Textile	TSH	38
TRAPANI	WSH001	Textile	SHO	44
TRIBSEES	WSWE05	Textile	SWE	32
TRILIJ	WTSH08	Textile	TSH	39
TRİYUGA	WSWE04	Textile	SWE	32
TSHIKAPA	WJAC06	Textile	VES	22
TUKRA	WTSH25	Textile	TSH	39
TULUA	WSHR02	Textile	CHE	34
TUPIZA	WBSH01	Technique	SHB	54
TURAW	WJAC04	Textile	VES	23
TUXTLA	WSHR01	Textile	CHE	34
TUYHOA	WPAN09	Textile	PAN	43
TYCHY	WBEA04	Textile	BAI	55

WHICH SIZE FOR MY SUIMSUIT?

<b>OXBOW</b>	0B	1B	2B	2C	3B	3C	4C	4D	5D
<b>STANDARD</b>	80B	85B	90B	90C	95B	95C	100C	100D	105D

WHICH SIZE FOR MY TOPS?

	0/34	1/36	2/38	3/40	4/42	5/44	6/46
Stature	164 cm	166 cm	168 cm	170 cm	171 cm	172 cm	173 cm
Bust measurement Tour poitrine	82 cm	86 cm	90 cm	94 cm	98 cm	102 cm	106 cm
Waist measurement Tour taille	61 cm	65 cm	69 cm	73 cm	77 cm	81 cm	85 cm
Hips measurement Tour bassin	88 cm	92 cm	96 cm	100 cm	104 cm	108 cm	112 cm



WHICH SIZE FOR MY BOTTOMS?

Bust / Waist / Hips (cm) Poitrine / Taille / Bassin (cm)	82/61/88	86/65/92		90/69/96		94/73/100	99/77/104		102/81/108	
<b>OXBOW</b>	0	1		2		3	4		5	
<b>FRANCE</b>	34	36		38		40	42		44	
Waist / Hips (cm) Taille / Bassin (cm)	61/88	64/91	66/93	69/96	72/99	74/101	77/104	79/106	82/109	84/111
<b>US</b>	25	26	27	28	29	30	31	32	33	34
Inseam length (1 inch=2,54 cm) Longueur entrejambe (1 inch = 2,54 cm)	32"			33"			34"			



WOM PANTS				
SKINNY LW - L32	STRAIGHT LW** - L33	REGULAR MR* - L33	CHINO MR	DUNGAREE
				
D2DAISYRAW - D2DAISYGRE	D2TUYHOA - D2DIZARBA D2DEBRAUSD - D2DEBRADAR D2DEBRADRY D2DEBRABRU	D2DIANADAR	D2TOPOLA - D2DABOU	D2DUNGAREE

\* MR = Mide Rise    \*\*LW = Low Waist



**OXBOW FRANCE**

*HEAD QUARTERS*  
20 AVENUE DE PYTHAGORE  
B.P. 90307  
33695 MÉRIGNAC CEDEX  
FRANCE  
TEL : +33 (0)5 56 18 40 00  
FAX : +33 (0)5 56 18 40 01

**OXBOW BELGIUM & LUXEMBURG**

*N.V. LWA S.A.*  
AVENUE EIFFEL 5  
ZONING INDUSTRIEL WAVRE NORD  
1300 WAVRE  
BELGIQUE  
TEL : +32 (0)10 23 58 41  
FAX : +32 (0)10 24 71 04

**OXBOW GERMANY**

*OXBOW SHOWROOM*  
M.O.C – RAUM D 112  
LILIENTHALALLEE 40  
80939 MUNCHEN  
DEUTSCHLAND  
TEL : +49 1743 44 2375  
FAX : +49 8932 19 8801

**OXBOW HAWAII**

*ELECTIK LLC - THIERRY DAUPIN*  
3102-A KAOHINANI DRIVE  
96817 HONOLULU  
USA  
TEL : +1 808 358 07 84

**OXBOW NETHERLANDS**

*LAFUMA BV*  
POSTBUS 180  
3830 AD LEUSDEN  
THE NETHERLANDS  
TEL : +31 (0) 33 432 04 99  
FAX : +31 (0) 33 432 09 44

**OXBOW SPAIN & ANDORRA & PORTUGAL**

*LAFUMA GROUP S.L.*  
EDIFICIO BMC  
RONDA MAIOLS, 1° DESPACHO 422  
08192 SANT QUIRZE DEL VALLES-  
BARCELONA  
SPAIN  
TEL : +34 937 122 297  
FAX : +34 937 209 080

**OXBOW USA**

140 OLD LARAMIE TRAIL  
LAFAYETTE CO 80026  
USA  
TEL : +1 303 527 1460  
FAX : +1 303 527 1464  
[www.lafumagroup.com](http://www.lafumagroup.com)

**BULGARIA**

*SUN & SNOW LTD*  
84 KOZLODUI STREET  
1233 SOFIA  
BULGARIA  
TEL : +359 888 250 333  
Email: [sunsnow@netissat.bg](mailto:sunsnow@netissat.bg)

**CANADA**

*MAEVA SURF*  
2005 BOULEVARD DANIEL JOHNSON  
H7T 1H8 LAVAL, QUEBEC  
CANADA  
TEL : +514 894 0118  
Email: [maevasurf@videotron.ca](mailto:maevasurf@videotron.ca)  
[www.maevasurf.com](http://www.maevasurf.com)

**CROATIA**

*KRUNA TRADE DOO*  
VINKOVAKA 8  
21000 SPLIT  
CROATIA  
TEL : +385 2138 0255  
FAX : +385 2138 0244  
Email: [damir.sablic@krunamode.hr](mailto:damir.sablic@krunamode.hr)  
[www.krunamode.hr](http://www.krunamode.hr)

**CZECH REPUBLIC**

SPORT KONCEPT SPOL S.R.O.  
PREZLETICKA 268/20  
190 00 PRAHA 9  
CZECH REPUBLIC  
TEL : +420 284 840 310

**ESTONIA**

*EXTREME SPORT LTD.*  
MERIVALJA TEE 1,  
11811 TALLINN,  
ESTONIA  
TEL : +372 606 22 02  
FAX : +372 606 22 01  
[www.extreme.ee](http://www.extreme.ee)

**FINLAND**

*NEONSUN OY*  
TURUNTIE 10  
13130 HAMEENLINNA  
FINLAND  
TEL : +358 (3) 6127222  
FAX : +358 (3) 361 27232

**FRENCH OVERSEAS TERRITORIES (DOM TOM)**

*NATHALIE REINARD*  
40 RUE DU PROFESSEUR LANDE  
33380 BIGANOS  
TEL : +33 (0)5 57 70 43 77  
+33 (0)6 28 84 45 36  
FAX : +33 (0)5 45 26 72 35  
Email: [nathalie.reinard@wanadoo.fr](mailto:nathalie.reinard@wanadoo.fr)

**GREECE**

*BODY ART SA*  
77, POSIDONOS AV.  
17455, ALIMOS – ATHENS  
GREECE  
TEL : +30 210 996 9701  
FAX : +30 210 994 7150

**IRELAND**

*PRIME SKATES LTD*  
T/A PRIME AGENCIES  
9 WASHINGTON STREET  
CO.CORK  
IRELAND  
TEL : +353 21 4275 922  
FAX : +353 21 4275 929

**JAPAN**

*MASSIVE INC*  
1F FLAT-N, 3-9-13,,  
KOSHIGOE, KAMAKURA,  
248-0033 KANAGAWA  
JAPAN  
TEL : +81 905 611 7501  
FAX : +81 3 5422 7121

**LITHUANIA**

*SURFHOUSE UAB*  
PARDUOTUVE RINKTINES 55,  
09207 VILNIUS  
LITHUANIA  
TEL : +370 5 2736 100  
[www.surfhouse.lt](http://www.surfhouse.lt)

**MALTA**

*BONELLO LTD*  
BAMBOO,  
210 ST SIMON STREET,  
BUGIBBA, SPB 2755,  
MALTA  
TEL : +356 2157 1565  
MOBILE : +356 99424940  
[www.bamboostores.com.mt](http://www.bamboostores.com.mt)

**MAURITIUS**

*SOB MAURITIUS LTD*  
1 CAP DAL VILLAGE  
TAMARIN  
ILE MAURICE  
TEL : +230 4837209  
FAX : +230 4838194

**PORTUGAL**

*PIMPAMPUM REPRESENTACOES LDA*  
AV 25 DE ABRIL N°35 4° DTO  
2600 274 VILA FRANCA DE XIRA  
PORTUGAL  
TEL : +351 263274200  
FAX : +351 966597418

**REUNION ISLAND**

*ANIS*  
88 RUE MARECHAL LECLERC  
97400 SAINT DENIS  
ILE DE LA REUNION  
TEL : +33 2 62 20 95 52  
FAX : +33 2 62 20 95 54

**RUSSIA**

*AQUA SPORT LLC*  
PROSPECT MIRA, BLD 133  
129229 MOSCOW  
RUSSIA  
TEL : +7 495 491 19 74/ 490 47 02  
FAX : +7 495 490 62 07

**SWITZERLAND**

*KAIROS OPTISPORTS SA*  
ROUTE DE CHALAIS 18  
CH – 3965 CHIPPIS  
SWITZERLAND  
TEL : +41 27 451 12 00  
FAX : +41 27 451 12 01  
[info@k-optisports.ch](mailto:info@k-optisports.ch)

**UNITED KINGDOM**

*ULTRA SPORT EUROPE LTD*  
CARNIVAL WAY  
CASTLE DONINGTON  
DERBYSHIRE DE74 2HP  
UK  
TEL : +44 0 1332 813 150  
FAX : +44 0 1332 813 151  
[www.ultrasporteu.com](http://www.ultrasporteu.com)



WORKBOOK DESIGNED BY OXBOW

CRÉDIT PHOTO :  
DAVID ANDRÉ  
MATT GEORGES  
ÉLINA SIRPARANTA  
BEN THOUARD

PHOTOS PRODUITS :  
SÉBASTIEN COTTEREAU / LUCKYSTUDIO

